



jordanfishwick

Slater Street
£925 PCM



Slater Street, Cheshire, SK11 8AG £925 PCM



The Property

AVAILABLE NOW PART FURNISHED

A well presented modern Mews, located on a quiet road in a convenient position for nearby schools, Macclesfield College, South Park and not far from Macclesfield town centre. In brief the property comprises; entrance vestibule, living room and kitchen on the ground floor. To the first floor are two double bedrooms and a bathroom. Externally, there is a driveway to the front providing off road parking. The private garden is well maintained and mainly laid to lawn with a small patio area. The garden is also fenced and enclosed. The property is fitted with uPVC double glazing and gas central heating.

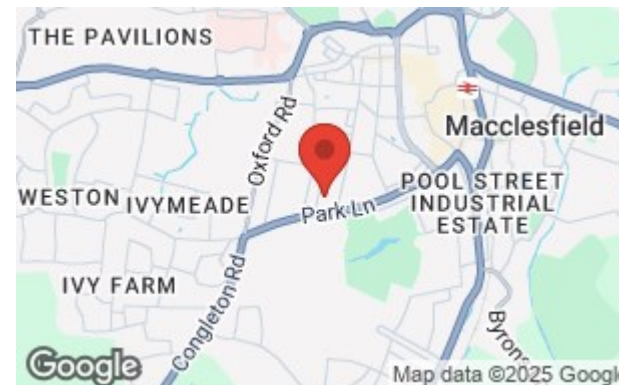
Contact Macclesfield 01625 502222. £925.00pcm

COUNCIL TAX B

EPC C

Directions

SK11 8AG



- TWO BEDROOMS
- POPULAR LOCATION
- MID MEWS
- WALKING DISTANCE OF TOWN CENTRE
- PARKING AND GARDEN
- COUNCIL TAX B
- EPC C

Postcode - SK11 8AG

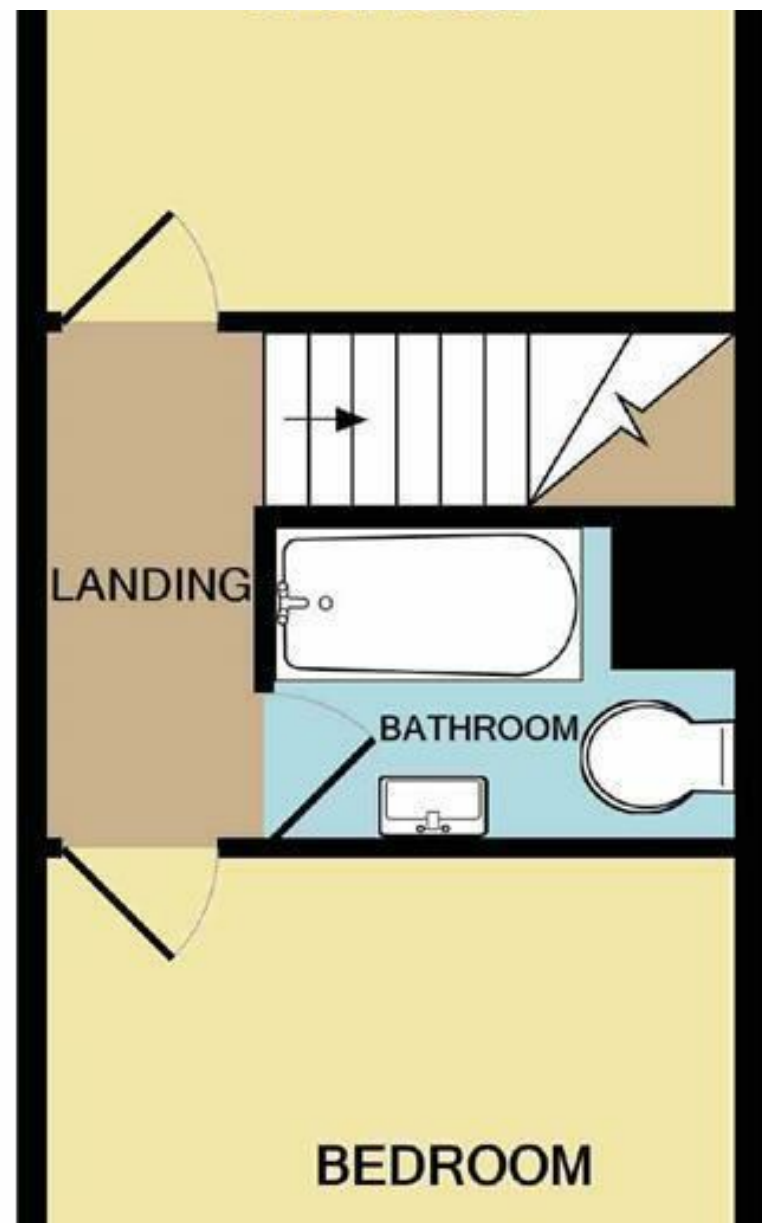
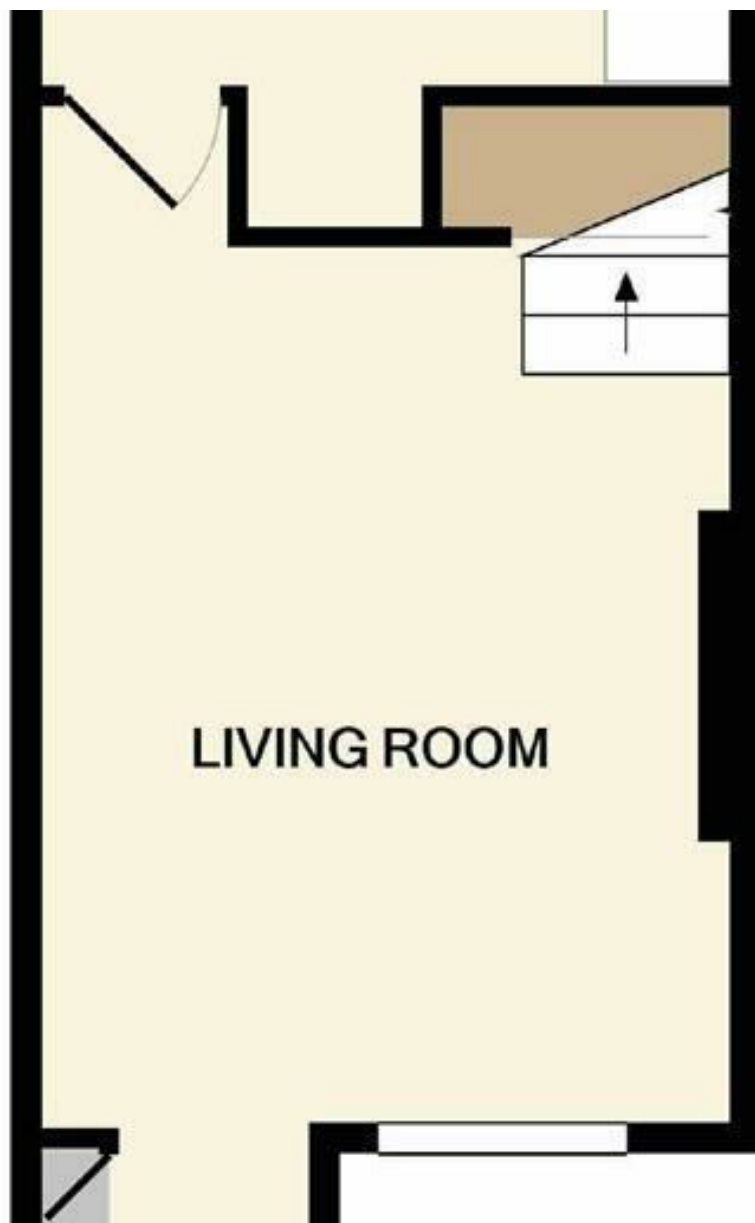
EPC Rating - C

Floor Area - sq ft

Local Authority - Cheshire East

Council Tax - B





These particulars are believed to be accurate but they are not guaranteed and do not form a contract. Neither Jordan Fishwick nor the vendor or lessor accept any responsibility in respect of these particulars, which are not intended to be statements or representations of fact and any intending purchaser or lessee must satisfy himself by inspection or otherwise as to the correctness of each of the statements contained in these particulars. Any floorplans on this brochure are for illustrative purposes only and are not necessarily to scale.

Offices at: Chorlton, Didsbury, Disley, Hale, Glossop, Macclesfield, Manchester Deansgate, Manchester Whitworth Street, New Mills, Sale, Wilmslow and Withington

01625 502222